

ESRTPRFK

Programmable Room Thermostat

Installation Instructions



Thank you for choosing ESi Controls.

All ESi products are tested in the UK so we are confident this product will reach you in perfect condition and give you many years of service. However, for additional peace of mind, we recommend you register your product online at www.esicontrols.co.uk/warranty for your extended warranty.

Contents

Installation Instructions

1	Technical Data.....	6
2	Installation.....	7
2.1	Batteries.....	7
2.2	Positioning Your ESRTPRFK.....	7
2.3	Pairing Your ESRTPRFK.....	7

Installation Instructions

1. Technical Data

*When paired with a 3 Channel RF Programmer (ES3247BRF)

Product Name	ESRTPRFK
Temperature Control Class	ErP Class I Product (1 %)
Power Supply	2 x AAA Batteries
Contact Type (RF Programmer)	Volt-Free SPST COM/NC/NO*
Total Switch Rating (RF Programmer)	3(1)A*
Temperature Sensor Type	Thermistor with intelligent compensation
Temperature Accuracy	+/-1°C @ 20°C
Temperature Adjustment Range	5°C - 35°C
Programming	Via RF Programmer
Number of Programs (RF Programmer)	3*
Programming Modes	7 Day, 5-2 Day, 24 Hour*
Ingress Protection Class	IP30
Enclosure Material	Flame retardant thermoplastic
Wi-Fi	Optional Wi-Fi Hub
RF	868Mhz
Dimensions	24mm (D) x 89mm (W) x 85mm (H)
Standard Compliance	EN60730-1, RED Directive 2014/53/EU, Electro-Magnetic Compatibility Directive 2014/EU Low Voltage Directive 2014/35/EU, Marking Directive 2014/30/EU

2 Installation

2.1 Batteries

Remove the back cover of your ESRTPRFK by pressing the release button on the bottom edge, (see *Image 1* below). Lift the back cover from your ESRTPRFK and install the 2 x AAA batteries supplied with the product.

Replace the rear cover by coupling the 2 hooks at the top of the rear cover with the 2 lugs inside the ESRTPRFK and clip the bottom on.

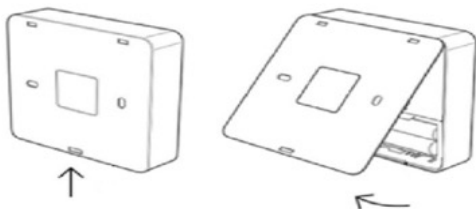


Image 1

2.2 Positioning Your ESRTPRFK

The ideal position for your room thermostat is approx. 1.5m above floor level, in a location where the thermostat is accessible, easily visible and free from extremes of temperature. It is not advisable to position your thermostat near sources of heat such as radiators, lights, TV, direct sunlight or on the interior of an outside wall.

Your ESRTPRFK can be wall mounted or it can be free standing by attaching it to the display stand included in the box.

To wall mount your room thermostat:

1. Remove the rear cover by pressing the release button on the bottom edge of your ESRTPRFK, (see *Image 1 above*).
2. Fix the rear cover to your wall using suitable wall plugs and screws, (see *Image 2 below*)
3. Attach 2 hooks at the top of the rear cover with the 2 lugs inside the ESRTPRFK and clip the bottom on.

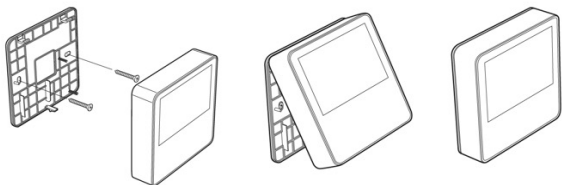


Image 2

2.3 Pairing Your ESRTPRFK

Your ESRTPRFK room thermostat will talk wirelessly to a compatible RF Programmer (ES3247BRF).

1. On your programmer, set the slider bar to the RUN position.
2. Press & Hold the **DAY** button until the display shows 'ZONE 1' and 'LINK THERMOSTAT'
3. Use the +/- buttons to select from the following:
 - ZONE 1 – Room thermostat for zone 1
 - ZONE 2 – Room thermostat for zone 2
4. Remove the rear cover of your ESRTPRFK by pressing the release button on the bottom edge, (See *Image 1 above*)
5. Hold the Pair RF button on the inside of your ESRT-PRFK (See *Image 4 below*) until your Programmer shows 'SUCCESS' on the display.

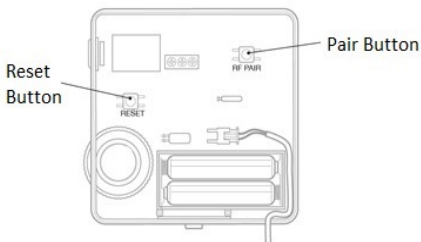


Image 3

6. Replace the cover of your ESRTPRFK.

We are continuously developing our products to bring you the very latest in energy saving technology and simplicity. However, should you have any questions setting up your controls please email us at sales@esicontrols.co.uk

Warning: Interference with sealed parts renders the guarantee void.

In the interests of continuous product improvement we reserve the right to alter designs, specifications and materials without prior notice and cannot accept liability for errors.



Energy Saving Innovative Controls Limited

www.esicontrols.co.uk

Version 1.1.0

© ESi Controls Limited 2022

