

WiFi Wireless Programmable Room Thermostat with Heating and Hot Water Control

Installation Instructions



1. Installation

Installation Safety Instructions

The unit must be installed by a suitably qualified person in accordance with the latest IEE Wiring Regulations. Isolate mains supply before commencing installation. Please read all instructions before proceeding.

Ensure that the fixed wiring connections to the mains supply are via a fuse rated at not more than 3 Amps and Class 'A' switch having a contact separation of a minimum of 3mm in all poles. The recommended cable sizes are 1.0mm sq or 1.5mm sq. No earth connection is required as the product is double insulated but ensure continuity of earth throughout the system.

General Safety Instructions

This product complies with the essential requirements of the following EC Directives:

- Electro-Magnetic Compatibility Directive 2014/30/EU.
- Low Voltage Directive 2014/35/EU.
- EC Marking Directive 2014/30/EU.

Please leave the user instructions with the end user where they should be kept in a safe place for future reference.

Warning Notices

WARNING: Always isolate the ac mains supply before installing. This product must be fitted by a competent person, and installation must comply with the guidance provided in the current editions of BS767 (IEE wiring regulations) and part "P" of the building regulations.

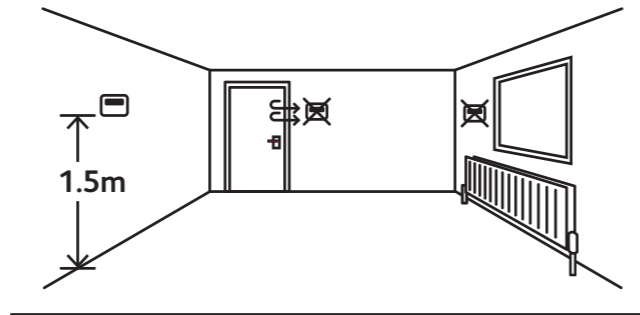
Maintenance

Always isolate the mains supply before commencing any work, servicing or maintenance on the system. Please read all instructions before proceeding.

Arrange for an annual maintenance and inspection schedule to be carried out by a qualified person on every part of the heating and hot water system.

Fitting the Programmable Room Thermostat

The ideal position to locate the Programmable Room Thermostat is about 1.5m above floor level, in a location where the thermostat is accessible, reasonably lit and free from extremes of temperature and draughts. Do not position the thermostat near sources of heat, such as radiators, lights, TV, direct sunlight or on an outside wall.

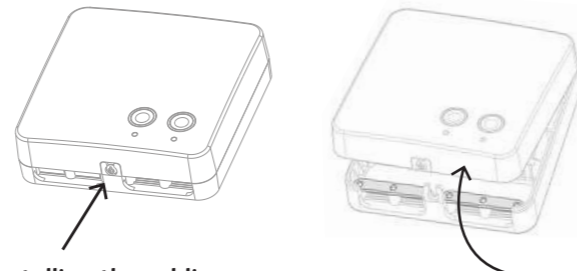


Required during installation:

- Permanent 230V power

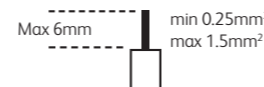
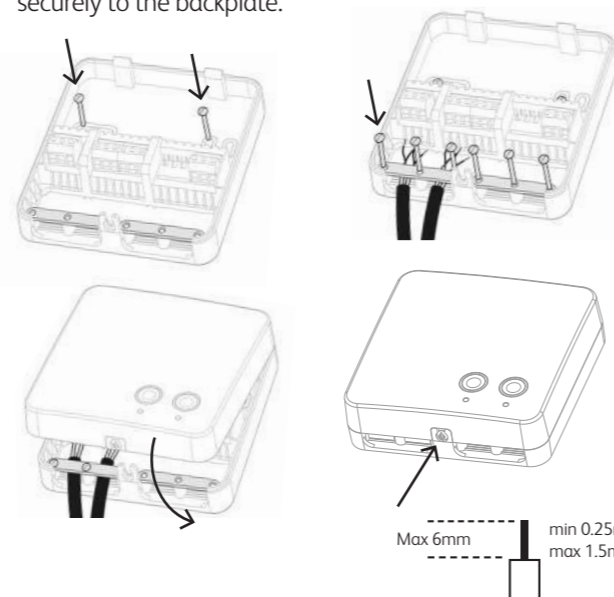
Preparing the power supply for installation:

- Find a suitable location near the boiler
- Loosen the screw at the bottom on the cover



Installing the cabling

- Hinge open and remove the front cover to reveal the terminals on the back plate
- Secure the back plate to a non-combustible flat surface or wall box
- Install the 230V power supply, switched live and 3 core low voltage cable. (N.B. Do not remove the link wire)
- Use the cable clamps to secure all surface wiring
- Replace the cover by first locating the two lugs at the top and swing down. Re tighten the screw to hold the cover securely to the backplate.



To test the receiver

- Turn on the power to the receiver first, followed by the thermostat.



After powering up the receiver, the two LEDs should be lit blue and red. The red indicates power and a solid blue indicates RF connection to the thermostat. If the blue light is flashing, please make sure the thermostat is powered on.

Push both the buttons separately to check if the boiler is switched on. The buttons have LEDs to signal calling for heat.

2. Technical Data

| | RTP6WHW Programmable Room Thermostat | Power Supply |
|---|--|-------------------------|
| Temperature Control Class | ErP Class IV Product (2%) | |
| Energy Efficiency Technology | TPI (Chrono-proportional) Control, DS (Delayed Start) | |
| Programming | 7 day, 5/2 or 24 hour | |
| Power Supply | 5VDC Stand | 230VAC |
| Temperature Adjustment Range | 5°C to 35°C | |
| Total Switch Rating | | 3(1)A |
| Heating Contact Type | 5VDC | 230VAC Switched Live |
| Temperature Sensor Type | Multi-thermistor with intelligent compensation | |
| Temperature Accuracy | +/- 1°C @ 20°C | |
| Enclosure material | Flame retardant thermoplastic | |
| Ingress Protection Class | IP30 | |
| Dimensions (main unit, excluding connections) | D14mm x W87mm x H88mm | D30mm x W110mm x H115mm |
| Programme Events | Fully programmable, selectable 4 or 6 per day. | |
| Clock | Crystal controlled, Automatic time change Summer/Winter (BST/GMT). Settable time-zone offsets | |
| Standard Compliance | EN60730-1 EN60730 2.7, EN55014 1:2006+A1:2009+A2:2011, EN61000-3-2:2014, EN61000-3-3:2013, EN55014-2: 2015, EN60730-1:2011, EMC Directive 2014/30/EU, LVD Directive 2014/35/EU | |

3. Optimisation Settings

- To enter the Advanced Menu, first wake the thermostat up by touching the home button.
- Touch and hold the until ADVANCED SETTINGS is displayed.
- Use the to navigate to the desired menu to be changed (OPTIMISATION).
- Touch the Home button to enter the menu, accept changes and move to the next settings.



Use to navigate to optimisation. Touch the home button to enter optimisation settings.

Touch the home button to enter heating settings. Select either OFF (default) or ON by using the .

Touch the home button to accept and return to menu.



Touch the home button to enter optimisation settings. Navigate to OPTIMUM STOP by using .

Repeat the above to change all the settings.



Continued overleaf

WARNING: Interference with sealed parts renders the guarantee void.

In the interests of continuous product improvement we reserve the right to alter designs, specifications and materials without prior notice and cannot accept liability for errors.

4. Technical Settings

- To enter the Technical Menu, navigate to the Installer Settings whilst in the Advanced Menu, touch and hold the until TECHNICAL SETTINGS is displayed.
- Use the to navigate to the desired menu to be changed (INSTALLER DETAILS).
- Touch the Home button to enter the menu, accept changes and move to the next settings.



Touch the home button to enter TECHNICAL SETTINGS.

Touch the home button to enter LOW TEMPERATURE PROTECTION menu.

Use the to set the desired temperature and touch the home button to save changes and return to the menu.



Use the to navigate to the SWING menu and touch the home button to enter menu.

Use the to set the desired temperature and touch the home button to save changes and return to the menu.



Use the to navigate to the TEMPERATURE CALIBRATION menu and touch the home button to enter menu.

Use the to set the desired temperature and touch the home button to save changes and return to the menu.

5. Entering Installer Details

- Navigate to the Technical Menu – See Section 4.
- Use the to navigate to the desired menu to be changed (INSTALLER DETAILS).
- Touch the Home button to enter the menu, accept changes and move to the next settings.



Use to navigate to INSTALLER DETAILS. Touch the home button to set the Installer Name.

Use the to enter the correct letter and touch the home button to move to the next letter.

Once name is completed continue to touch the home button until the screen shows saving.



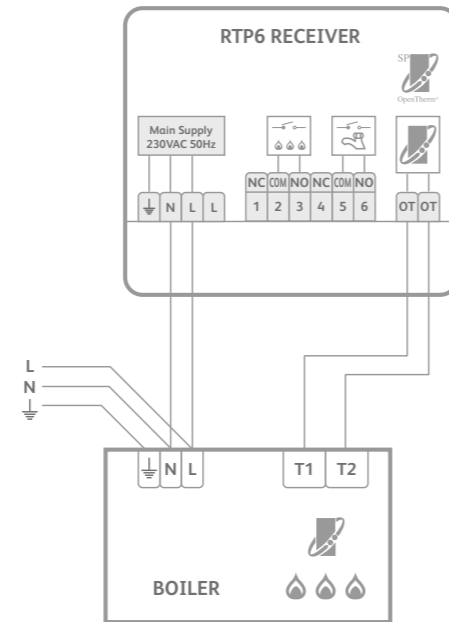
After saving is complete the screen will display the installer TELEPHONE NUMBER.

Use the to enter the correct number and touch the home button to accept and move to the next number.

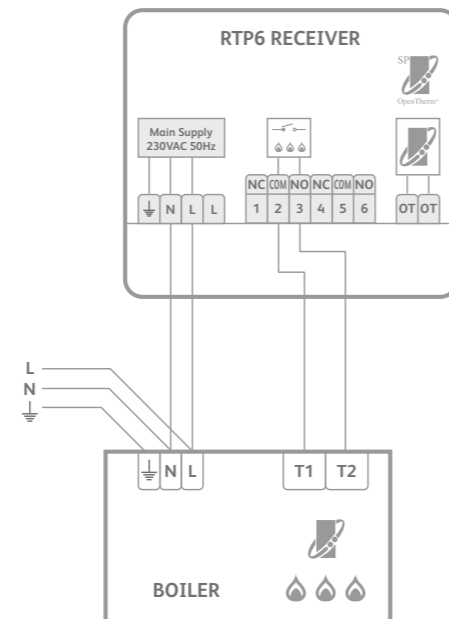
Once number is completed continue to touch the home button until the screen shows saving.

6. Wiring Diagrams

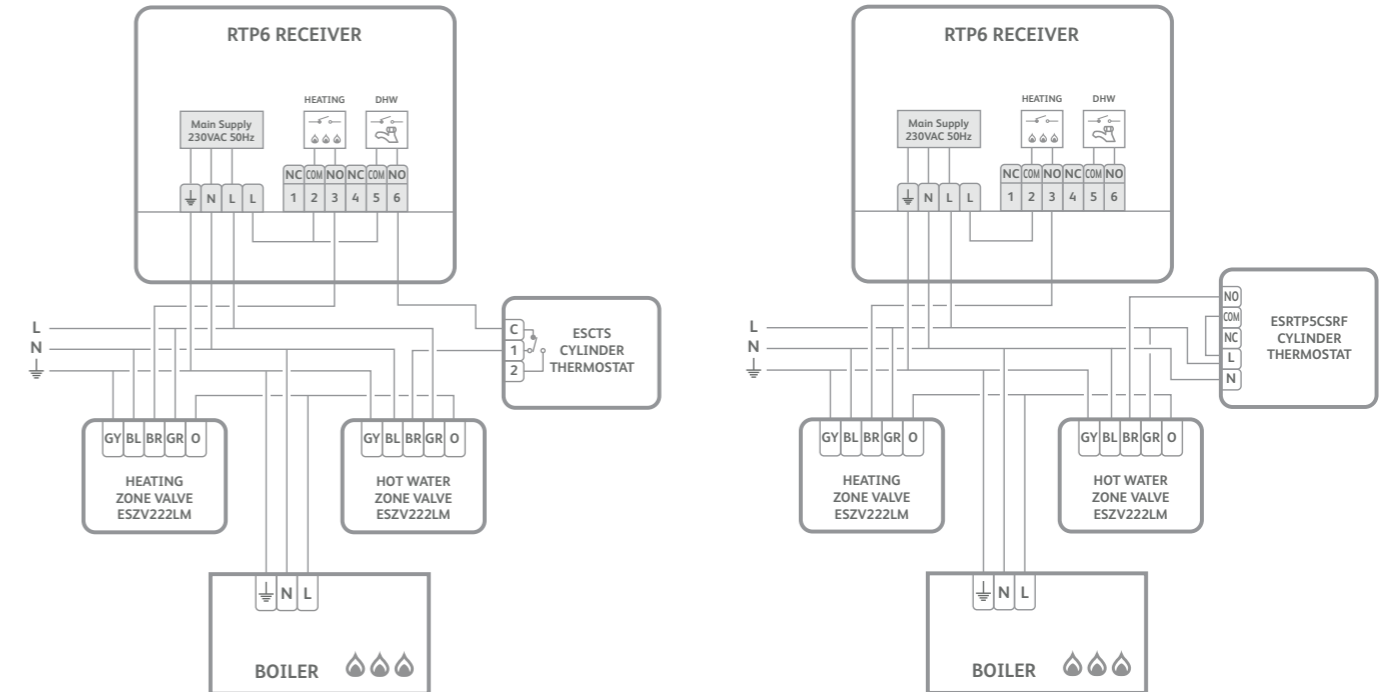
ESRTP6WHW OpenTherm



ESRTP6WHW Combi Boiler



ESRTP6WHW S Plan



ESRTP6WHW Y Plan

