

ESCTP-RF

Programmable Cylinder Thermostat

User instructions



Thank you for choosing ESi Controls.

All our products are tested in the UK so we are confident this product will reach you in perfect condition and give you many years of service. However, for additional peace of mind, we recommend you register your product online at **www.esicontrols.co.uk/warranty** for your extended warranty.

Contents

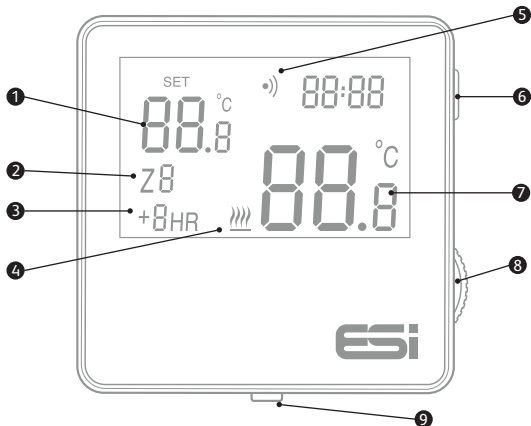
User instructions



- | | |
|---|----|
| 1. Quick operating guide | |
| 1.1 Display and button functions | 6 |
| 2. Operation modes | |
| 2.1 Manual | 8 |
| 2.2 Off | 8 |
| 2.3 Auto | 8 |
| 3. Extra operation modes | |
| 3.1 Boost | 9 |
| 4. Set temperature | 10 |
| 5. RF pairing | 10 |
| 6. Factory reset | 12 |
| 7. Program settings | |
| 7.1 Factory pre-set program | 13 |
| 7.1.1 Default program settings: 5/2 day | 13 |
| 7.1.2 Program settings: 7 day | 13 |
| 7.1.3 Program settings: 24 hours | 13 |

User instructions

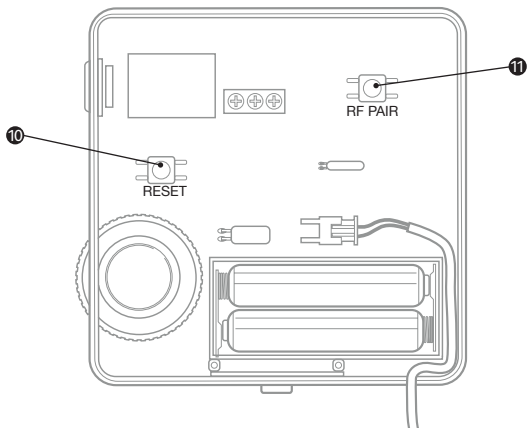
1. Quick operating guide

1.1 Display and button functions (Outer)



- ❶ Set temperature
- ❷ Connection status (Standalone or RF connected)
- ❸ Boost status
- ❹  Flame symbol when system calling for heat
- ❺  RF working status
- ❻ MODE button
- ❼ Temperature
- ❽ Dial to adjust temperature and parameters
- ❾ Release button

Button functions (Inner)



- ⑩ RESET button
- ⑪ RF pair button

2. Operation modes

1.1 Display and button functions

By default, the thermostat will start in **MANUAL** mode.

Use the dial to select the set temperature. (Default 50.0°C)

The cylinder thermostat will permanently aim to maintain the cylinder at the set temperature

***N.B:** When in standalone configuration (not paired to any other wireless device), the display will show Z1.*

2.2 OFF

To turn **OFF** the cylinder thermostat, **press** and **hold** the **Mode** button for 5 seconds. When **OFF** mode has been selected, the display will also turn off.

To turn the cylinder thermostat back **ON**, **press** and **hold** the **Mode** button for 5 seconds. When turned back on, the display will also turn on.

2.3 AUTO

If the thermostat is paired with a compatible Wi-Fi room thermostat (i.e. ES RTP6WHW, ES RTP6CW, etc.) The **AUTO** mode will be available both through the “heating and hot water schedule” on the room thermostat, or through the ESi Controls Centro app.

Once the schedule has been set, the cylinder thermostat will ask for heat at the set **ON** times, and it will use the set temperature previously selected.

***N.B:** When in Auto mode, the display will show Z2 instead of Z1.*

3. Extra operation mode

3.1 Boost

When the cylinder thermostat is in **AUTO** mode, the cylinder thermostat allows for a temporary override to the schedule.

1. When in **AUTO** mode, **press mode** button to make display show +1HR.
2. The cylinder thermostat will enter **boost** mode for one hour or until the next programme event.
3. **Press mode** button again to select +2HR or +3HR of boost time.
4. To turn off boost mode, **press mode** button to go through the +1HR, +2HR, +3HR and no boost options.

The display will show the target temperature, the cylinder temperature and the flame symbol.

Boost mode hours setting range: 1-3 hours.

N.B: *On the App, the hours (Boost) will numerically countdown. Once the countdown has finished normal operation will resume.*

4. Set temperature

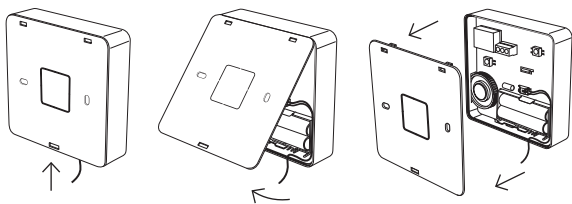
Define the set temperature for **MANUAL** mode, or for the programmes when operation mode is set to **AUTO** or use the dial to select the set temperature value in °C.

Set temperature range: 25.0 – 65.0°C. Default value 50.0°C

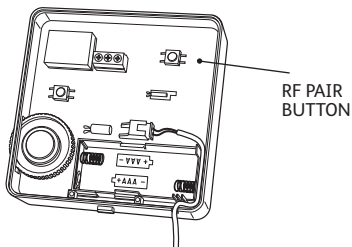
5. RF pairing

The **ESCTP-RF** model can communicate wirelessly with some ESi Controls room thermostats or receivers, which can potentially grant access and control of the cylinder thermostat via the ESi Controls Centro APP.

1. Press the release button on the bottom of the thermostat, to open it and have access to the **PAIR** button on the inside of the thermostat.



-
2. **Press** and **hold PAIR** button until the display shows **PAIr**.



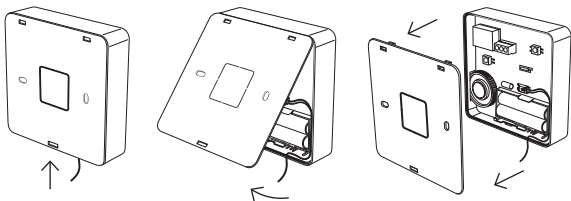
3. Make sure the other device being paired is also in pairing mode.
4. Once the **RF** has successfully paired with the other device, it will display **SET** and then it will return to the home screen.

Whilst in pairing mode **press PAIR** button to cancel and return to previous menu.

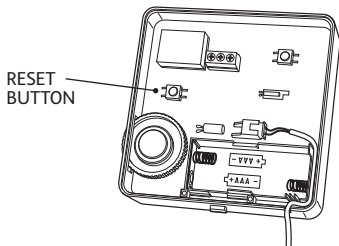
6. Factory reset

This function will reset all the parameters to the factory default.

1. Press the release button on the bottom of the thermostat, to open it and have access to the **RESET** button on the inside of the thermostat.



2. Press **RESET** button until the display goes blank.



3. The display will restart, and it will illuminate all segments.
4. The unit will load the default parameters, when complete it will return to home screen.

7. Program settings

7.1 Factory pre-set programme

Only available when paired with a compatible Wi-Fi room thermostat (i.e. ES RTP6WHW, ES RTP6CW, etc.)

This unit has been designed to be a simple to use thermostat, requiring minimal user intervention with a pre-programmed heating profile. The pre-set heating times and temperatures will suit most people (See table below). Operation setting range: 5/2 day, 7 day, 24 Hour. Default: 5/2 Day. Events setting range: 2 events or 3 events. Default: 3 events.

7.1.1 Default Program Settings: 5/2 Day

Event	Time (ON)	Time (OFF)	Event	Time (ON)	Time (OFF)		
Weekdays	P1	06:30	08:30	Weekends	P1	07:30	10:00
	P2	12:00	13:00		P2	12:00	13:00
	P3	17:00	22:30		P3	17:00	22:30

The programs will control the cylinder temperature, based on the defined set temperature, see section 5.2 for more details.

7.1.2 Program Settings: 7 Day

In 7 day setting, the unit allows for a different setting for each day of the week, the pre-set settings are the same as the 5/2 Day programme.

7.1.3 Program Settings: 24 Hours

In 24hr setting, the program will be the same for all days. The pre-set settings are the same as the weekdays of the 5/2 Day programme.

We are continuously developing our products to bring you the very latest in energy saving technology and simplicity. However, should you have any questions setting up your controls please email us at **sales@esicontrols.co.uk** or for technical queries call us on our dedicated technical helpline **01280 816868**.

WARNING: Interference with sealed parts renders the guarantee void.

In the interests of continuous product improvement we reserve the right to alter designs, specifications and materials without prior notice and cannot accept liability for errors.



Energy Saving Innovative Controls Limited

www.esicontrols.co.uk

Version 1.001

© ESi Controls Ltd 2021

