

ESCTP-RF

Programmable Cylinder Thermostat

Installation Instructions



Thank you for choosing ESi Controls.

All ESi products are tested in the UK so we are confident this product will reach you in perfect condition and give you many years of service. However, for additional peace of mind, we recommend you register your product online at www.esicontrols.co.uk/warranty for your extended warranty.

Contents

Installation Instructions

1 Technical Data	5
1.1 Parameter Settings	5
1.2 Technical Settings	5
2 Installation	6
2.1 Installation Safety Instruction	6
2.2 Maintenance	7
2.3 General Safety Instructions	7
2.4 Warning Notice	7
2.5 Fitting Your ESCTP-RF	8
2.6 Installing Your ESCTP-RF	8
2.7 Wiring Diagrams	9
2.8 ES3247BRF Wiring	10
2.9 ESRT66WHW Wiring	12

Installation Instructions

1. Technical Data

1.1 Parameter Settings

Auto Mode*	
Set Temperature	25°C - 65°C (Default: 50°C)
Program Event Start/End Time	00:00–23:50 (User Manual Section 6)
Program Operation Mode	5-2 Day, 7 Day, 24 Hour (Default: 5-2 Day)
Number of Programs	3
Manual Mode	
Manual Mode Temperature	25°C - 65°C (Default: 50°C)
Boost Mode	
Boost Mode Temperature	25°C - 65°C (Default: 50°C)
Boost Mode Hours	1-3

* Only available when paired with a compatible RF Programmer or Wi-Fi room thermostat.

1.2 Technical Settings

Power Supply	2 x AAA Batteries
Temperature Sensor Accuracy	+/- 1°C at 20°C
Total Switch Rating	5A 230VAC
Plastic Type	Thermoplastic, flame retardant
Protection Rating	IP30
Dimensions	88mm (L) x 88mm (W) x 23mm (D)

Factory Pre-Set Program*	Yes (See section 6 of User Manual)
Complies With	EN60730-1, EN60730-2.7, EN5014-1:2006+A1:2009+A2:2011, EN61000-3-2:2014, EN61000- 33:2013, EN 55014-2:2015, EN607301:2011, EMC Directive 2014/30/EU, LVD Directive 2014/35/EU

* Only available when paired with a compatible RF Programmer or Wi-Fi room thermostat.

2 Installation

2.1 Installation Safety Instructions

This unit must be installed by a suitably qualified person in accordance with the latest IEE Wiring Regulations.

Isolate mains supply before commencing installation. Please read all instructions before proceeding.

Ensure that the fixed wiring connections to the mains supply is via a fuse rated at not more than 6 amps and class 'A' switch having a contact separation of a minimum of 3mm in all poles. The recommended cable sizes are 1.0mm² or 1.5mm².

No earth connection is required as the product is double insulated but ensure continuity of earth throughout the system.

2.2 Maintenance

Always isolate the mains supply before commencing any work, servicing or maintenance on the system. Please read all instructions before proceeding.

Arrange for an annual maintenance and inspection schedule to be carried out by a qualified person on every part of the heating and hot water system.

2.3 General Safety Instructions

This product complies with the essential requirements of the following EC Directives:

- Electro-Magnetic Compatibility Directive 2014/EU.
- Low Voltage Directive 2014/35/EU
- Marking Directive 2014/30/EU

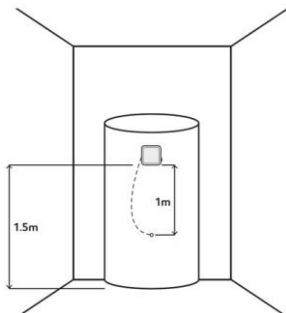
2.4 Warning Notice

WARNING

Always isolate the AC mains supply before installation. This product must be fitted by a qualified person and installation must comply with the guidance provided in the current edition of BS767 (IEE wiring regulations) and part "P" of the building regulations.

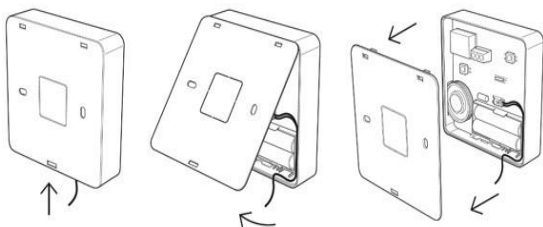
2.5 Fitting Your ESCTP-RF

The Cylinder Thermostat should be installed where it will be easily accessible, visible, free of obstructions and extreme temperatures. Some cylinders allow for the thermostat to be mounted directly into the cylinder, please check with your cylinder manual for details, alternatively, the thermostat can be mounted to a wall close to the cylinder. Before fixing the thermostat to the desired position, ensure that the temperature probe has enough length to reach the probe pocket in the cylinder.

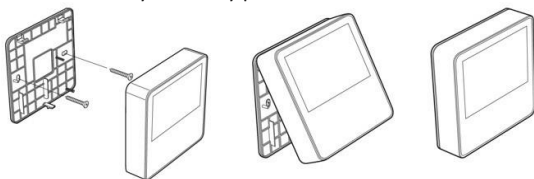


2.6 Installing Your ESCTP-RF

1. Press the release button at the bottom of the unit, then gently loosen from the unit, unhooking from bottom to top.



2. Fix the mounting plate onto the cylinder itself or onto a wall nearby ensuring that the temperature probe will reach the cylinder dry pocket.



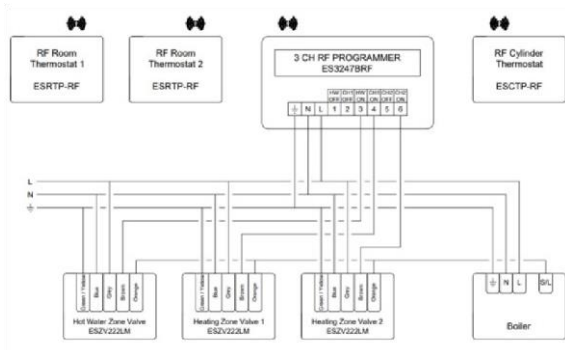
2.7 Wiring Diagrams

Check your boiler wiring diagram for the connection requirements. The wiring diagrams below cover the most common connection methods. Incorrect wiring can cause damage to your boiler and the thermostat.

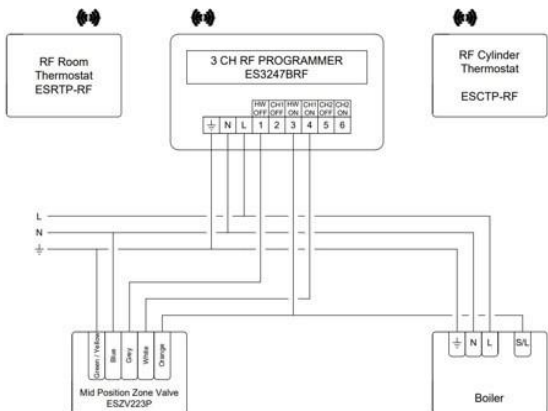
The ESCTP-RF cylinder thermostat will communicate wirelessly to a compatible RF Programmer, (ES3247BRF) or a compatible Wi-Fi Room Thermostat, (ESRTP6WHW)

2.8 ES3247BRF Wiring

S Plan

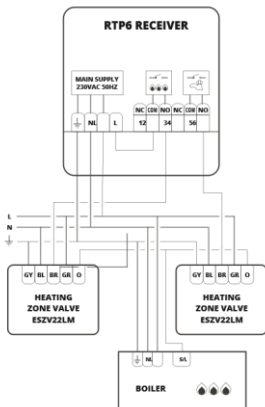


Y Plan

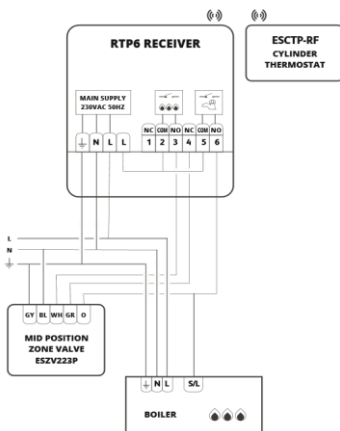


2.9 ES RTP6WHW Wiring

S Plan



Y Plan





Energy Saving Innovative Controls Limited

www.esicontrols.co.uk

Version 1.1.0

© ESi Controls Limited 2022

